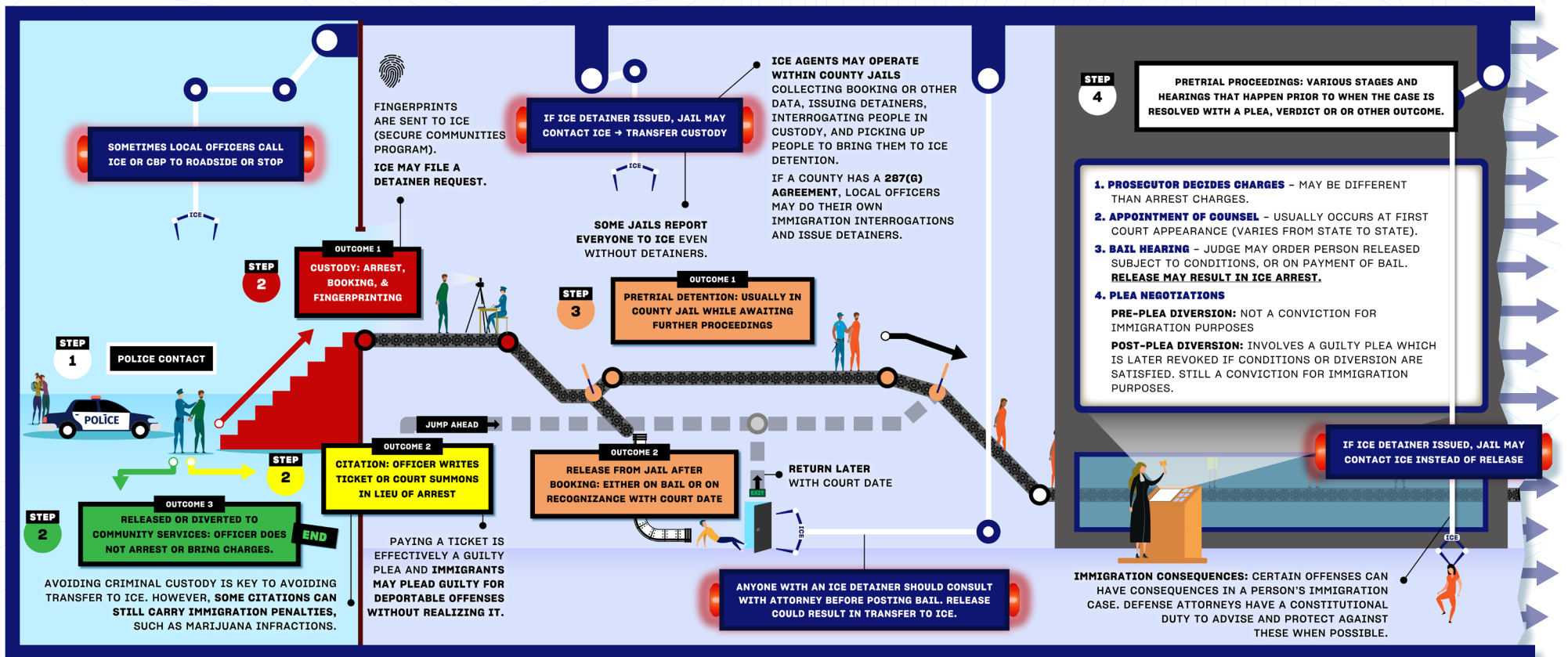


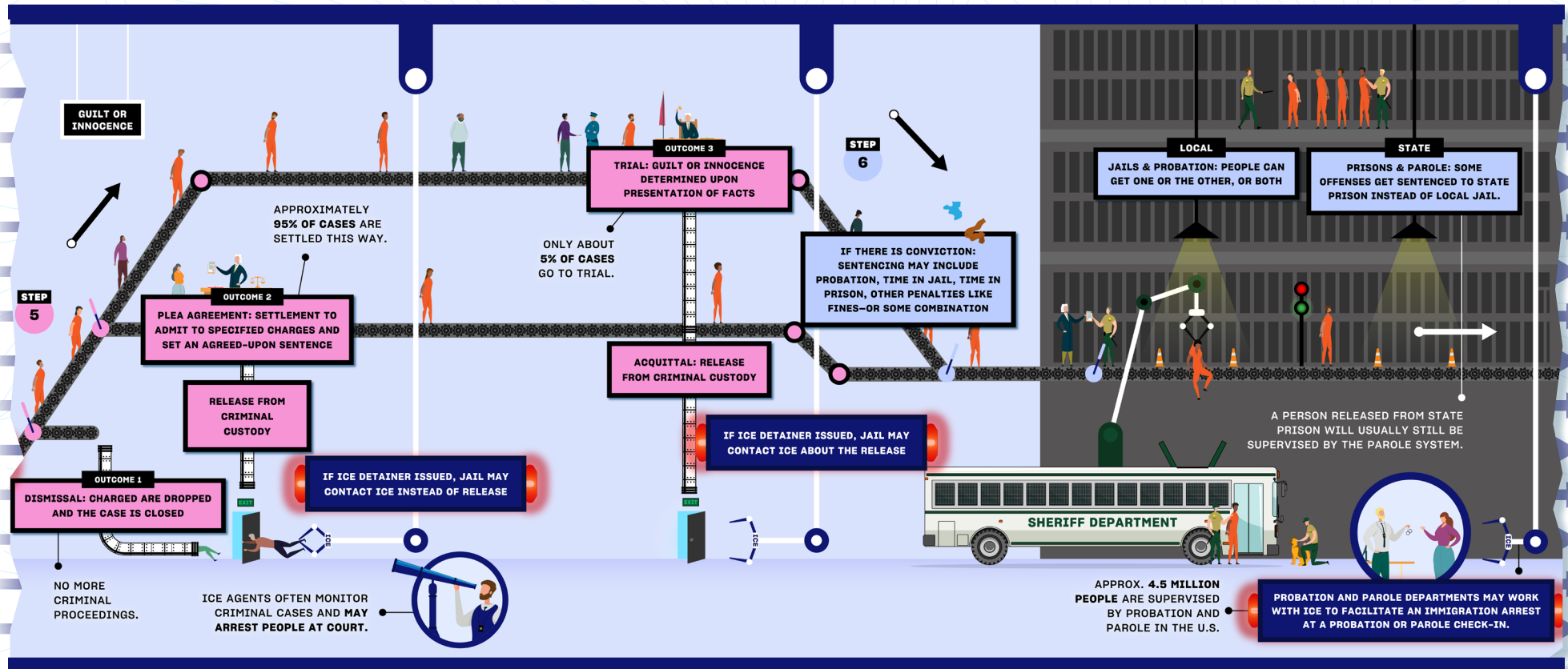
DECONSTRUCTING THE ARREST-TO-DEPORTATION PIPELINE

Did you know? Despite the real risk of Immigration & Customs Enforcement (ICE) visiting someone's home, below is the primary pathway in which most vulnerable immigrants will find the highest risk of deportation. This infographic maps out the United States' arrest-to-deportation pipeline and offers a glimpse of the multiple ways immigrants can be pushed into removal proceedings, from initial contact with law enforcement to immigration detention.

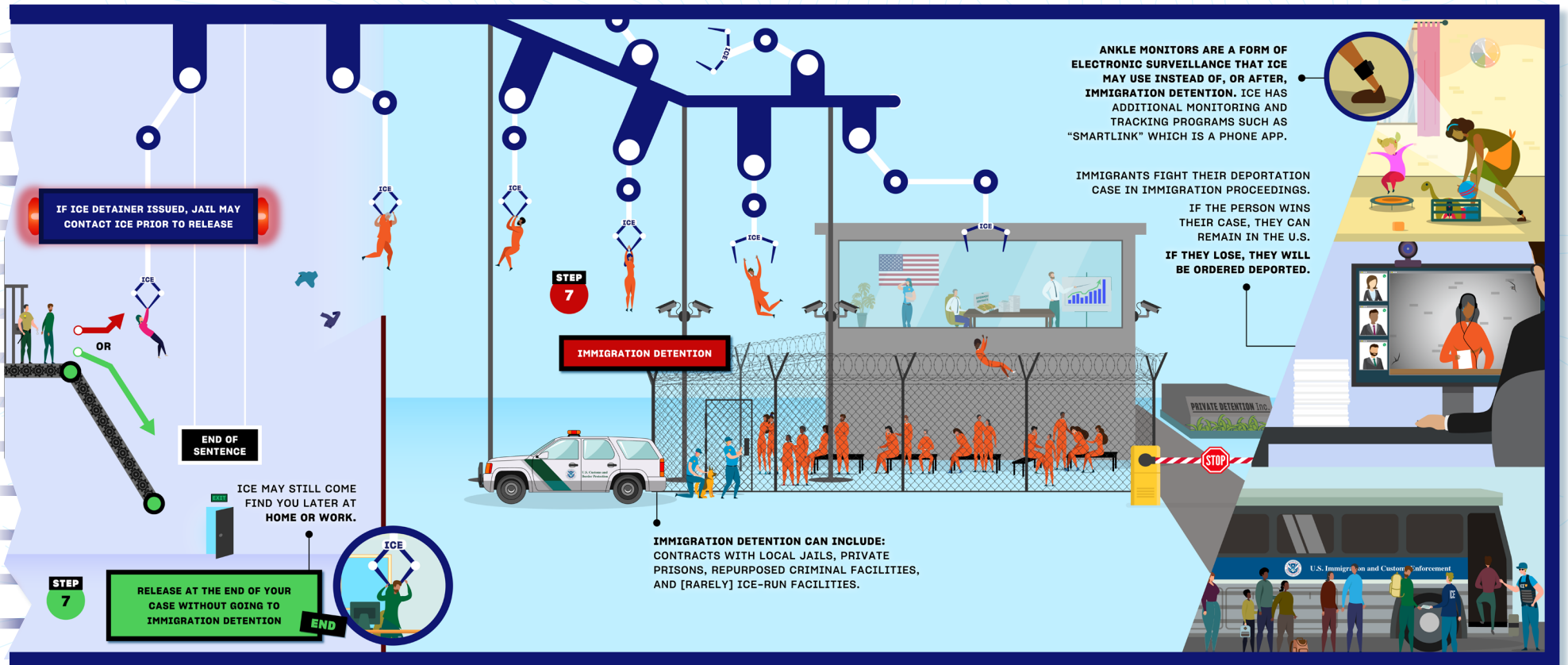
Because there are regional differences in local law enforcement policies, variances in which cities participate in federal immigration enforcement programs, and new state-specific laws that serve the deportation machine, this infographic is *NOT* exhaustive.



DECONSTRUCTING THE ARREST-TO-DEPORTATION PIPELINE



DECONSTRUCTING THE ARREST-TO-DEPORTATION PIPELINE



For more *Know Your Rights* community resources, visit ilrc.me/protect