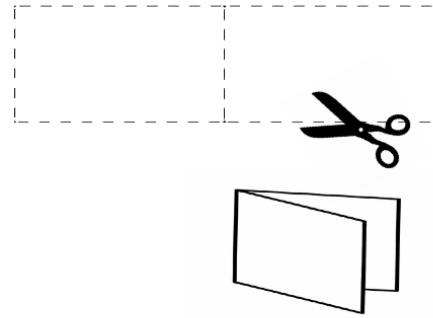


To print at home, use heavy weight paper, or card stock. Cut out the cards along the dotted lines. If you're unable to print on both sides, you can simply fold on the center line to make a 2-sided card.

If you use a professional printer, we suggest you print 2-sided cards with white text on red card stock with rounded corners.



! nwere ikike iwu obodo

EMEGHELA ỤZỌ ma ọ bụrụ na onye ọrụ mbata na ọpụpụ na-akụ aka n' ọnụ ụzọ.

AZALA AJUJU Ọ BULA: sitere n' aka onye ọrụ mbata na ọpụpụ ma ọ bụrụ na ha nwaa igwa gi okwu. ! nwere ikike igbachi nkịtị.

ABIANYELA AKA N' IHE na-ebughị ụzọ gwa onye ọka iwu okwu. ! nwere ikike igwa onye ọka iwu okwu.

Ọ bụrụ na ino n' ẹzị ụlọ gi, juo onye ọrụ ahụ ma ! nweere onwe gi ipu ma ọ bụrụ na ha asị ẹe, pụ nwayọọ.

ENYE KAADỊ ONYE NNOCHI ANYA. Ọ bụrụ na ino n' ime ụlọ gi, gosi kaadị ahụ site na windo ma ọ bụ s' ite n' okpuru ọnụ ụzọ

www.ilrc.org/red-cards

I do not wish to speak with you, answer your questions, or sign or hand you any documents based on my 5th Amendment rights under the United States Constitution.

I do not give you permission to enter my home based on my 4th Amendment rights under the United States Constitution unless you have a warrant to enter, signed by a judge or magistrate with my name on it that you slide under the door.

I do not give you permission to search any of my belongings based on my 4th Amendment rights.

I choose to exercise my constitutional rights.

These cards are available to citizens and noncitizens alike.

! nwere ikike iwu obodo

EMEGHELA ỤZỌ ma ọ bụrụ na onye ọrụ mbata na ọpụpụ na-akụ aka n' ọnụ ụzọ.

AZALA AJUJU Ọ BULA: sitere n' aka onye ọrụ mbata na ọpụpụ ma ọ bụrụ na ha nwaa igwa gi okwu. ! nwere ikike igbachi nkịtị.

ABIANYELA AKA N' IHE na-ebughị ụzọ gwa onye ọka iwu okwu. ! nwere ikike igwa onye ọka iwu okwu.

Ọ bụrụ na ino n' ẹzị ụlọ gi, juo onye ọrụ ahụ ma ! nweere onwe gi ipu ma ọ bụrụ na ha asị ẹe, pụ nwayọọ.

ENYE KAADỊ ONYE NNOCHI ANYA. Ọ bụrụ na ino n' ime ụlọ gi, gosi kaadị ahụ site na windo ma ọ bụ s' ite n' okpuru ọnụ ụzọ

www.ilrc.org/red-cards

I do not wish to speak with you, answer your questions, or sign or hand you any documents based on my 5th Amendment rights under the United States Constitution.

I do not give you permission to enter my home based on my 4th Amendment rights under the United States Constitution unless you have a warrant to enter, signed by a judge or magistrate with my name on it that you slide under the door.

I do not give you permission to search any of my belongings based on my 4th Amendment rights.

I choose to exercise my constitutional rights.

These cards are available to citizens and noncitizens alike.

! nwere ikike iwu obodo

EMEGHELA ỤZỌ ma ọ bụrụ na onye ọrụ mbata na ọpụpụ na-akụ aka n' ọnụ ụzọ.

AZALA AJUJU Ọ BULA: sitere n' aka onye ọrụ mbata na ọpụpụ ma ọ bụrụ na ha nwaa igwa gi okwu. ! nwere ikike igbachi nkịtị.

ABIANYELA AKA N' IHE na-ebughị ụzọ gwa onye ọka iwu okwu. ! nwere ikike igwa onye ọka iwu okwu.

Ọ bụrụ na ino n' ẹzị ụlọ gi, juo onye ọrụ ahụ ma ! nweere onwe gi ipu ma ọ bụrụ na ha asị ẹe, pụ nwayọọ.

ENYE KAADỊ ONYE NNOCHI ANYA. Ọ bụrụ na ino n' ime ụlọ gi, gosi kaadị ahụ site na windo ma ọ bụ s' ite n' okpuru ọnụ ụzọ

www.ilrc.org/red-cards

I do not wish to speak with you, answer your questions, or sign or hand you any documents based on my 5th Amendment rights under the United States Constitution.

I do not give you permission to enter my home based on my 4th Amendment rights under the United States Constitution unless you have a warrant to enter, signed by a judge or magistrate with my name on it that you slide under the door.

I do not give you permission to search any of my belongings based on my 4th Amendment rights.

I choose to exercise my constitutional rights.

These cards are available to citizens and noncitizens alike.

! nwere ikike iwu obodo

EMEGHELA ỤZỌ ma ọ bụrụ na onye ọrụ mbata na ọpụpụ na-akụ aka n' ọnụ ụzọ.

AZALA AJUJU Ọ BULA: sitere n' aka onye ọrụ mbata na ọpụpụ ma ọ bụrụ na ha nwaa igwa gi okwu. ! nwere ikike igbachi nkịtị.

ABIANYELA AKA N' IHE na-ebughị ụzọ gwa onye ọka iwu okwu. ! nwere ikike igwa onye ọka iwu okwu.

Ọ bụrụ na ino n' ẹzị ụlọ gi, juo onye ọrụ ahụ ma ! nweere onwe gi ipu ma ọ bụrụ na ha asị ẹe, pụ nwayọọ.

ENYE KAADỊ ONYE NNOCHI ANYA. Ọ bụrụ na ino n' ime ụlọ gi, gosi kaadị ahụ site na windo ma ọ bụ s' ite n' okpuru ọnụ ụzọ

www.ilrc.org/red-cards

I do not wish to speak with you, answer your questions, or sign or hand you any documents based on my 5th Amendment rights under the United States Constitution.

I do not give you permission to enter my home based on my 4th Amendment rights under the United States Constitution unless you have a warrant to enter, signed by a judge or magistrate with my name on it that you slide under the door.

I do not give you permission to search any of my belongings based on my 4th Amendment rights.

I choose to exercise my constitutional rights.

These cards are available to citizens and noncitizens alike.