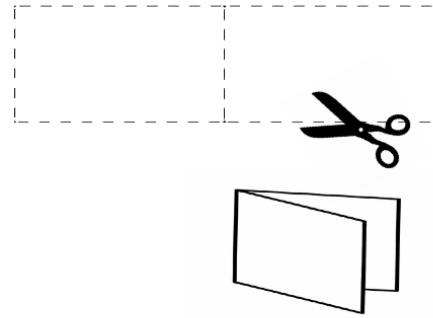


To print at home, use heavy weight paper, or card stock. Cut out the cards along the dotted lines. If you're unable to print on both sides, you can simply fold on the center line to make a 2-sided card.

If you use a professional printer, we suggest you print 2-sided cards with white text on red card stock with rounded corners.



Kana da haƙƙin tsarin mulki:

- KADA KA BUDE KOFAR idan wakilin shige da fice yana buga kofa.
- KADA KA AMSA KOWANE TAMBAYOYI daga wakilin shige da fice idan sun yi kofarin yin magana da kai. Kana da damar yin shiru.
- KADA KA SA HANNU A KOMAI ba tare da fara magana da lauya ba. Kana da damar yin magana da lauya.
- Idan kana waje da gidan ka, tambayi wakilin idan kana da 'yancin tafiya kuma idan sun ce eh, ka tafi a cikin nutsuwa.
- BADA WANNAN KATIN GA WAKILI. Idan kana cikin gidanka, nuna katin ta taga ko ka tura shi ta karkashin kofar.

www.ilrc.org/red-cards

I do not wish to speak with you, answer your questions, or sign or hand you any documents based on my 5th Amendment rights under the United States Constitution.

I do not give you permission to enter my home based on my 4th Amendment rights under the United States Constitution unless you have a warrant to enter, signed by a judge or magistrate with my name on it that you slide under the door.

I do not give you permission to search any of my belongings based on my 4th Amendment rights.

I choose to exercise my constitutional rights.

These cards are available to citizens and noncitizens alike.

Kana da haƙƙin tsarin mulki:

- KADA KA BUDE KOFAR idan wakilin shige da fice yana buga kofa.
- KADA KA AMSA KOWANE TAMBAYOYI daga wakilin shige da fice idan sun yi kofarin yin magana da kai. Kana da damar yin shiru.
- KADA KA SA HANNU A KOMAI ba tare da fara magana da lauya ba. Kana da damar yin magana da lauya.
- Idan kana waje da gidan ka, tambayi wakilin idan kana da 'yancin tafiya kuma idan sun ce eh, ka tafi a cikin nutsuwa.
- BADA WANNAN KATIN GA WAKILI. Idan kana cikin gidanka, nuna katin ta taga ko ka tura shi ta karkashin kofar.

www.ilrc.org/red-cards

I do not wish to speak with you, answer your questions, or sign or hand you any documents based on my 5th Amendment rights under the United States Constitution.

I do not give you permission to enter my home based on my 4th Amendment rights under the United States Constitution unless you have a warrant to enter, signed by a judge or magistrate with my name on it that you slide under the door.

I do not give you permission to search any of my belongings based on my 4th Amendment rights.

I choose to exercise my constitutional rights.

These cards are available to citizens and noncitizens alike.

Kana da haƙƙin tsarin mulki:

- KADA KA BUDE KOFAR idan wakilin shige da fice yana buga kofa.
- KADA KA AMSA KOWANE TAMBAYOYI daga wakilin shige da fice idan sun yi kofarin yin magana da kai. Kana da damar yin shiru.
- KADA KA SA HANNU A KOMAI ba tare da fara magana da lauya ba. Kana da damar yin magana da lauya.
- Idan kana waje da gidan ka, tambayi wakilin idan kana da 'yancin tafiya kuma idan sun ce eh, ka tafi a cikin nutsuwa.
- BADA WANNAN KATIN GA WAKILI. Idan kana cikin gidanka, nuna katin ta taga ko ka tura shi ta karkashin kofar.

www.ilrc.org/red-cards

I do not wish to speak with you, answer your questions, or sign or hand you any documents based on my 5th Amendment rights under the United States Constitution.

I do not give you permission to enter my home based on my 4th Amendment rights under the United States Constitution unless you have a warrant to enter, signed by a judge or magistrate with my name on it that you slide under the door.

I do not give you permission to search any of my belongings based on my 4th Amendment rights.

I choose to exercise my constitutional rights.

These cards are available to citizens and noncitizens alike.

Kana da haƙƙin tsarin mulki:

- KADA KA BUDE KOFAR idan wakilin shige da fice yana buga kofa.
- KADA KA AMSA KOWANE TAMBAYOYI daga wakilin shige da fice idan sun yi kofarin yin magana da kai. Kana da damar yin shiru.
- KADA KA SA HANNU A KOMAI ba tare da fara magana da lauya ba. Kana da damar yin magana da lauya.
- Idan kana waje da gidan ka, tambayi wakilin idan kana da 'yancin tafiya kuma idan sun ce eh, ka tafi a cikin nutsuwa.
- BADA WANNAN KATIN GA WAKILI. Idan kana cikin gidanka, nuna katin ta taga ko ka tura shi ta karkashin kofar.

www.ilrc.org/red-cards

I do not wish to speak with you, answer your questions, or sign or hand you any documents based on my 5th Amendment rights under the United States Constitution.

I do not give you permission to enter my home based on my 4th Amendment rights under the United States Constitution unless you have a warrant to enter, signed by a judge or magistrate with my name on it that you slide under the door.

I do not give you permission to search any of my belongings based on my 4th Amendment rights.

I choose to exercise my constitutional rights.

These cards are available to citizens and noncitizens alike.