

# Fighting Where we can Win

---

---

---

---

---

---

---

---

Immigrant Legal Resource Center

©2018 Immigrant Legal Resource Center 2

---

---

---

---

---

---

---

---

**Introductions**

Carolina Canizales, ILRC  
Bob Libal - Grassroots Leadership  
Erika Almiron - Juntos  
Lena Graber - ILRC - moderator

©2018 Immigrant Legal Resource Center

---

---

---

---

---

---

---

---

### Overview

1. Victory in Philly and the value of local power
2. Police-ICE collusion primer
3. Identifying the key problems in your community
4. Picking local targets
5. Important Allies
6. Shaping the narrative
7. Q & A

©2018 Immigrant Legal Resource Center

4

---

---

---

---

---

---

---

---

### Power in Philadelphia

City of Philadelphia Ends Controversial Contract With ICE; Expands Its "Sanctuary City" Status

Posted in Featured post, Immigration



City of Philadelphia Ends Controversial Contract With ICE; Expands Its "Sanctuary City" Status

©2018 Immigrant Legal Resource Center

5

---

---

---

---

---

---

---

---

### Police-ICE Collusion Primer

- Information sharing and gathering
  - SComm
  - Criminal Alien Program
  - Database sharing
  - Ad hoc calls
- Arrests and holds
  - ICE detainers
  - 287(g)
  - Joint patrols
  - Direct calls for assistance
  - Detention contracts

©2018 Immigrant Legal Resource Center

6

---

---

---

---

---

---

---

---

### Identifying Collusion in Your Community



What are the important problems in your community?

Who should you ask and where?

Key investigations and sources

©2018 Immigrant Legal Resource Center

7

---

---

---

---

---

---

---

---

### Identifying Collusion in Your Community

Reasons why we demand for Austin to be a [#FreedomCity](#) ...  
Join us Thurs 6/14 at 5:45pm at City Hall and help make Austin a [#FreedomCity #SB4isRacist](#)

Austin police were **7 times more likely** to arrest Black residents for possession of small quantities of marijuana than white residents

Source: Austin Police Department, 2017 data

©2018 Immigrant Legal Resource Center

8

---

---

---

---

---

---

---

---

### Identifying Collusion in Your Community

#### WHAT HAPPENS IF THE POLICE ARREST ME?



WHEN YOU'RE ARRESTED, YOUR COUNTRY OF ORIGIN, SOCIAL SECURITY NUMBER AND YOUR ADDRESS ARE ENTERED INTO A LOCAL DATABASE KNOWN AS P.A.R.S



CURRENTLY, THE CITY OF PHILADELPHIA AND ICE SHARE THIS DATABASE. IF YOU ARE ARRESTED AND HAVE A RE-ENTRY, OR LACK A SOCIAL SECURITY NUMBER IT'S POSSIBLE THAT ICE CAN HAVE ACCESS TO YOUR INFORMATION.



WHEN THE CITY OF PHILADELPHIA SHARES THIS INFORMATION, IT COULD LEAD TO A DEPORTATION! THIS GOES AGAINST EVERYTHING THAT BEING A SANCTUARY CITY MEANS!

**WE MUST EXPAND OUR DEFINITION OF SANCTUARY!**  
THE CITY MUST NOT RENEW ITS P.A.R.S CONTRACT ON AUG 31ST AND THROW A WRENCH IN ICE'S DEPORTATION MACHINE!

©2018 Immigrant Legal Resource Center

9

---

---

---

---

---

---

---

---

**Local Targets**

- **Primary targets:** the person who can end the contract/policy/ funding that is enabling collaboration with ICE
  - Sheriff/Police Chief
  - Mayor/County Executive
  - City/County Council
  - etc.
- **Secondary targets:** individuals/ interest groups who influence your primary targets to make a decision on an issue
  - City/County attorney (could be target)
  - District Attorney/Prosecutor (could be a target)
  - Local editorial board
  - Federal Congress members and state representatives
  - etc.

©2018 Immigrant Legal Resource Center

10

---

---

---

---

---

---

---

---

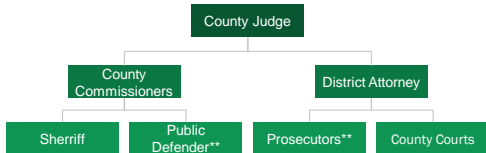
---

---

**Local Targets**



**Bexar County Structure Example**



**\*\* non-elected positions**

©2018 Immigrant Legal Resource Center

---

---

---

---

---

---

---

---

---

---

**Local Targets**

"TODAY PHILLY HAS SHOWN ONCE AGAIN IT IS NOT AFRAID TO DO WHAT IS RIGHT FOR OUR COMMUNITIES. WE NOW SERVE AS A REAL BEACON OF LIGHT TO OTHER CITIES ACROSS THE COUNTRY WHO MAY BE ASKING THEMSELVES 'WHAT MORE CAN I DO TO PROTECT FAMILIES WHO ARE BEING TORN APART?' ENDING ICE'S ACCESS TO PASS HELPS PROTECT SOME OF OUR FAMILIES FROM THE GRIPS OF DEPORTATION AND HELPS TO ENSURE THE CITY ISN'T COMPLICIT IN AIDING ICE TO DO SO. WE LOOK FORWARD TO BUILDING MORE POLICIES TOGETHER WITH THE CITY TO FURTHER PROTECT OUR LOVED ONES AND TO EXPAND PHILADELPHIA'S SANCTUARY CITY STATUS."

-ERIKA ALMIRON, EXECUTIVE DIRECTOR OF JUNTOS.



Mayor of Philadelphia announces that the city of Philadelphia will NOT renew the PARS contract with ICE

---

---

---

---

---

---

---

---

---

---

**Key Allies**



- Supporters of your issue generally:
  - Faith, labor, educators, health, civil rights groups, racial justice orgs, criminal justice reform organizations, etc.
- Other stakeholders on your specific issues:
  - Public defenders, private bar, criminal attorneys
- Characters in your story:
  - Key stories that illustrate the problem and demand solution
- Others you can mobilize
  - Need to educate them about your issue to bring them on

©2018 Immigrant Legal Resource Center

---

---

---

---

---

---

---

---

**Key Allies**

Austin: coalition effort of criminal justice reform & immigrant organizations including Grassroots Leadership, United We Dream, & Workers Defense Project



©2018 Immigrant Legal Resource Center

14

---

---

---

---

---

---

---

---

**Key Allies**



To address how to expand sanctuary policies in Philadelphia Juntos has partnered with the Coalition for a Just DA that includes organizations like the Coalition to Abolish Death by Incarceration, the Philadelphia Student Union, Project Safe, Red Umbrella, and many others.

©2018 Immigrant Legal Resource Center

---

---

---

---

---

---

---

---

### Shaping the Narrative

- Arrest/deportation/detention cases are our truth and the story that we must tell
- Every time you tell your story you're educating and broadening your reach
- Your story always tells **the problem + your ask + your target**



©2018 Immigrant Legal Resource Center

---

---

---

---

---

---

---

---

### Shaping the Narrative

We cannot talk about a city as a sanctuary and not do everything possible to remove ICE from our city.



©2018 Immigrant Legal Resource Center

---

---

---

---

---

---

---

---

### Shaping the Narrative

SB4 prohibits "sanctuary" policies that disallow local law enforcement officials from collaborating with ICE. So Austin became a Freedom City, with changes to arrests and detentions that affect all residents.



©2018 Immigrant Legal Resource Center

---

---

---

---

---

---

---

---

### Freedom City Policy

**The Freedom City Policy:**

- Directs City Manager and Police Chief to phase out all discretionary arrests
- Mandates that federal requests for assistance in immigration activities are vetted with police management and comply with stated public safety priorities
- Compels regular public reporting on all instances of police providing assistance to ICE with a written justification
- Directs police to inform immigrants of constitutional rights, including right to stay silent

©2018 Immigrant Legal Resource Center

---

---

---

---

---

---

---

---

### Recap

Map the system just like ICE does, and find all the possible interventions.



Pick your key targets, but don't forget secondary targets who have influence.

Important allies aren't just in immigrant rights but in criminal justice, social work, and beyond

©2018 Immigrant Legal Resource Center

---

---

---

---

---

---

---

---

## QUESTIONS

©2018 Immigrant Legal Resource Center

---

---

---

---

---

---

---

---

### Upcoming Webinars

#### National Context: The Legal Fights over Sanctuary Policies

**Date:** October 10, 2018

**Time:** 11:00 am – 12:00 pm Pacific Time

#### Police-ICE Collusion: Essential Knowledge and Interventions

**Date:** November 28, 2018

**Time:** 11:00 am – 12:00 pm Pacific Time

©2018 Immigrant Legal Resource Center

22

---

---

---

---

---

---

---

---

### Thank you for attending!

- Please remember to complete survey
- Make sure you received all materials

Join Our Social Networking Community



---

---

---

---

---

---

---

---